


Place St Maur and Esplanade
Bognor Regis



Questionnaire

Public Engagement on Concept Design Proposals
February 2021



Due to current Covid restrictions it has been necessary to base this public engagement for Place St Maur online. This booklet provides a hard copy summary of the concept design proposals and questionnaire which are also available online at

<https://www.lucmaps.co.uk/Place>

Alternatively if you telephone our contact centre on **01903 737500** they will complete the online survey on your behalf.

If you choose to complete this questionnaire by hand please return to:

Arun District Council
Bognor Regis Town Hall
Clarence Rd, Bognor Regis,
West Sussex, PO21 1LD

The letterbox next to the main door of the Town Hall is emptied daily.

About you

1. Your age group (please circle):

0-11 12-18 19-25 26-39 40-60 61-75 75+

2. Where do you live? (please state postcode if happy to do so):

.....

3. How did you hear about the consultation? (tick all that apply)

- ☐ Bognor Regis Observer
- ☐ Poster/banner
- ☐ Email
- ☐ Social media
- ☐ Local radio
- ☐ Word of mouth
- ☐ Arun District Council website
- ☐ Letter through post
- ☐ Other (please specify):

.....

Project background

Welcome to the public consultation on Place St. Maur.

LUC has been appointed by Arun District Council to develop the design for Place St. Maur and the Esplanade. Place St Maur is an important public space adjacent to the Regis Centre in Bognor Regis and the seafront, but it is not fulfilling its potential as an attractive and welcoming space for visitors.

The Council has provisionally secured government funding through a Coast to Capital grant scheme providing opportunity to enhance the Place St Maur site. The scheme will be delivered in Spring 2022.



Strategic objectives

The strategic objectives for the project are:

- To complete the enhanced public realm link between the seafront and town centre.
- To create a high quality, welcoming space for visitors to spend time in.
- To create a flexible venue for outdoor events.

Project scope

The project aims to develop and implement a masterplan for **Place St Maur** including the following elements:

- Enhanced hard landscape and drainage.
- Areas of soft landscape.
- Water play.
- Lighting.
- Seating.

A key principle of the proposed layout is to create a flexible space to accommodate a continuing and expanded range of events.

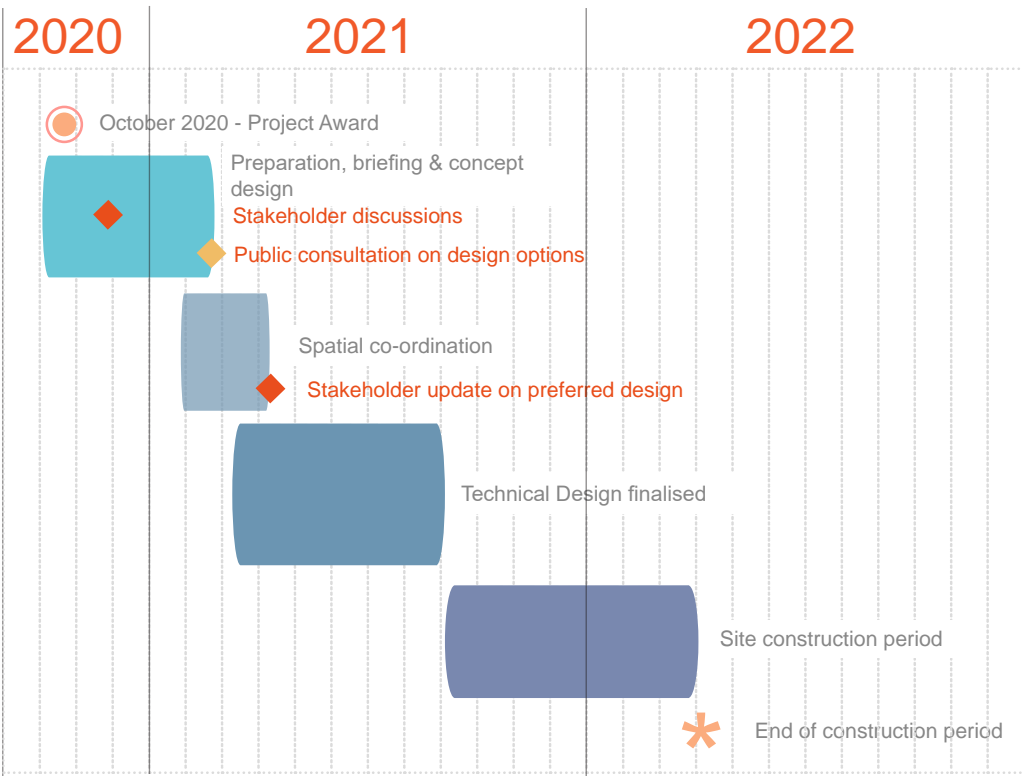
Proposals for the **Esplanade** are conceptual only at this stage and include an enhanced wearing course to the highway and footways, in-ground infrastructure, temporary planting and seating to support and facilitate events.

Engagement to date

LUC has engaged with a range of stakeholder groups, including Council Officers representing a range of different service areas, Council Members, business interests, and neighbours of Place St Maur. This has helped to develop a better understanding of the existing site, potential opportunities and future management needs.

Programme

Below is an outline programme for the project. The project is taking place over an 18 month period with completion of works at Place St Maur expected by the end of March 2022. This public consultation is an important part of the process and will inform the development of the preferred design.



Existing site



1. View from Belmont street looking south



2. Level change between Place St. Maur and the Esplanade



3. Interface with Seafront Mounds



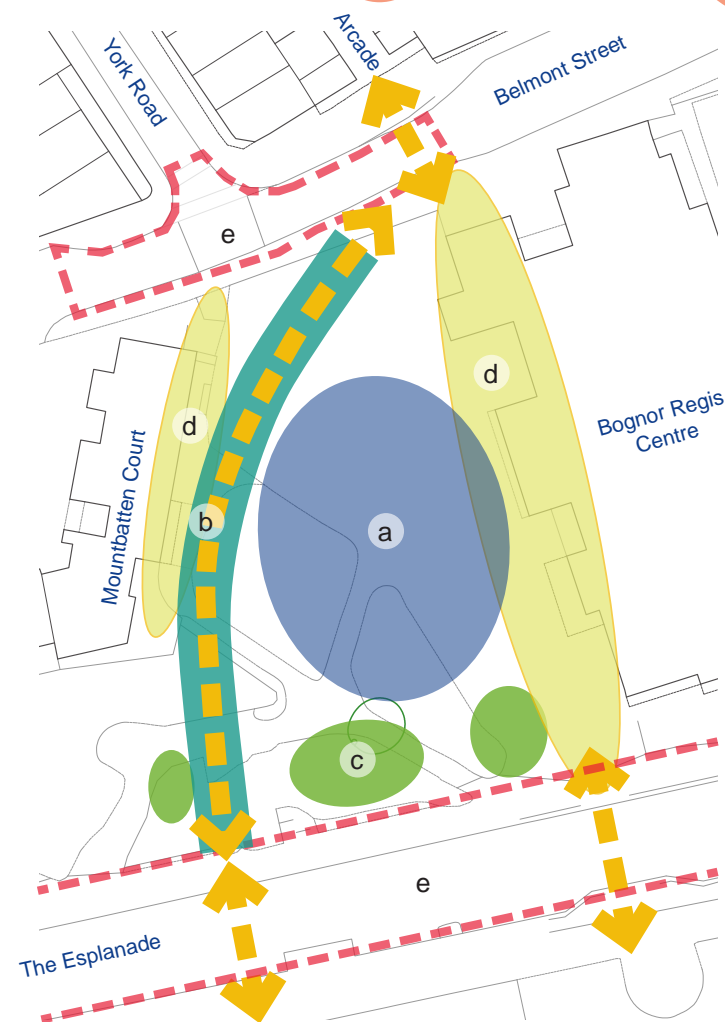
4. Interface with Mountbatten Court



5. View from the promenade looking north



6. View from the Esplanade, looking north



- a** Open space for water play and in-ground infrastructure to support events
- b** Green corridor providing buffer between residents and activities, slower route and seating
- c** Raised areas providing shelter and visual connection to seafront
- d** Interface with cafés/commercial units
- e** Pedestrian-friendly zone with improved connections to town centre and seafront (concept only)
- Yellow arrow Pedestrian connection with creation of wider pedestrian crossings



Flexible space for seasonal events



Green corridor provides quieter route



Pedestrian-friendly Esplanade



Raised areas provide shelter and greenery



Open space for water feature and water play



Spill-out seating areas

Core Design Principles

The diagram opposite presents some core design principles for the proposed scheme. To what extent do you support these? (Circle relevant number)

4. Open space for water play and space to support events (including improved infrastructure to facilitate)

1	2	3	4	5	6	7	8	9	10
Not so much				Mostly					Very much

5. Green corridor providing soft planted buffer between existing residents and areas of activity, promoting a slower route through the site with places to sit, rest and relax.

1	2	3	4	5	6	7	8	9	10
Not so much				Mostly					Very much

6. Raised landscape areas, in keeping with the sea front mounds, to provide shelter and visual connection to seafront, with opportunity to sit, play and rest.

1	2	3	4	5	6	7	8	9	10
Not so much				Mostly					Very much

7. Spill-out areas for cafés and commercial units, (including space for tables and chairs, and litter bin provision)

1	2	3	4	5	6	7	8	9	10
Not so much				Mostly					Very much

8. Pedestrian-friendly zone with improved connections to town centre and seafront (concept only)

1	2	3	4	5	6	7	8	9	10
Not so much				Mostly					Very much

Waves: organic pattern



Precedent: flowing lines



Wave patterning along the shore at Bognor Regis

Sand Ripples: geometric pattern



Precedent: use of lines and colour



Sand ripples formations at Bognor Regis

Concept & colour



Indicative paving forms



Paseo Bandera, Santiago

Fish & Gull: abstract



Concept - abstract: bespoke fish and gull patterning



Curved white lines used to accentuate grey tones



Linear forms using 3 sand colour tones

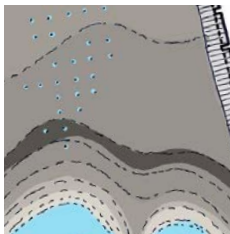
Paving

This page presents some illustrative images and options for different paving types.

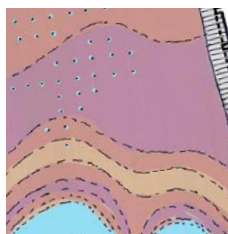
9. Which types do you prefer most? (please rank from 1 to 5, with 5 being most preferred and 1 least preferred)

- ☐ Bright colours with modern design
- ☐ More subtle colours or textures
- ☐ Organic patterns
- ☐ Geometric patterns
- ☐ Abstract patterns such as the 'fish and gull' design

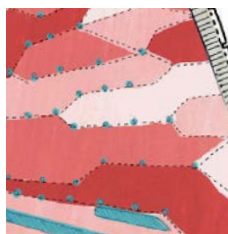
Colour examples:



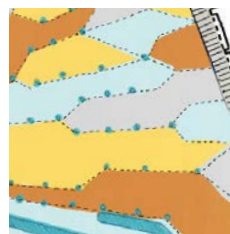
Grey shades



Warm earth tones



Abstract colour palette



Sand and sea

Lighting integrated with water



Folkestone Harbour - water jet display and water play feature (The Fountain Workshop)



Lighting integrated with water jets

Water jets



Queen Elizabeth Olympic Park (The Fountain Workshop)



The Level, Brighton - jets (LUC project)

Reflective pools for quiet enjoyment



Hull City Centre - reflective pool (The Fountain Workshop)

Shallow stream



King's Cross, London - Water stream (The Fountain Workshop)

Water play

This page presents some illustrative images of different types of water play.

10. Which types do you prefer most? (please rank from 1 to 5, with 5 being most preferred and 1 least preferred)

- ☐ Water jets
- ☐ Shallow pools for splash play
- ☐ Shallow stream or rill providing a route/journey
- ☐ Lighting integrated with water to provide early evening light displays
- ☐ Reflective pools for quiet enjoyment

Shallow pool for splash play



Cassiobury Park, Watford - shallow water pools for varied water play (LUC project)

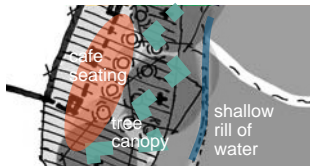
Sketch option 1: Waves

This page describes Sketch Option 1, which is based on an organic 'waves' concept.

11. What are your favourite elements of this option? (please rank from 1 to 6, with 6 being most favourite and 1 least favourite)

- ☐ Green corridor with trees, planting, gabion cage / timber top seating, boulders and café seating areas
- ☐ Water play with jets and shallow pools in organic pattern
- ☐ Dynamic paving in 'wave' pattern
- ☐ Seafront mounds with lawns, planting and gabion seating
- ☐ Small area of informal play for younger children
- ☐ Pedestrian-friendly surface to the Esplanade with reduced-width carriageway (concept only)

Green corridor



Dynamic paving



Pedestrian-friendly surface



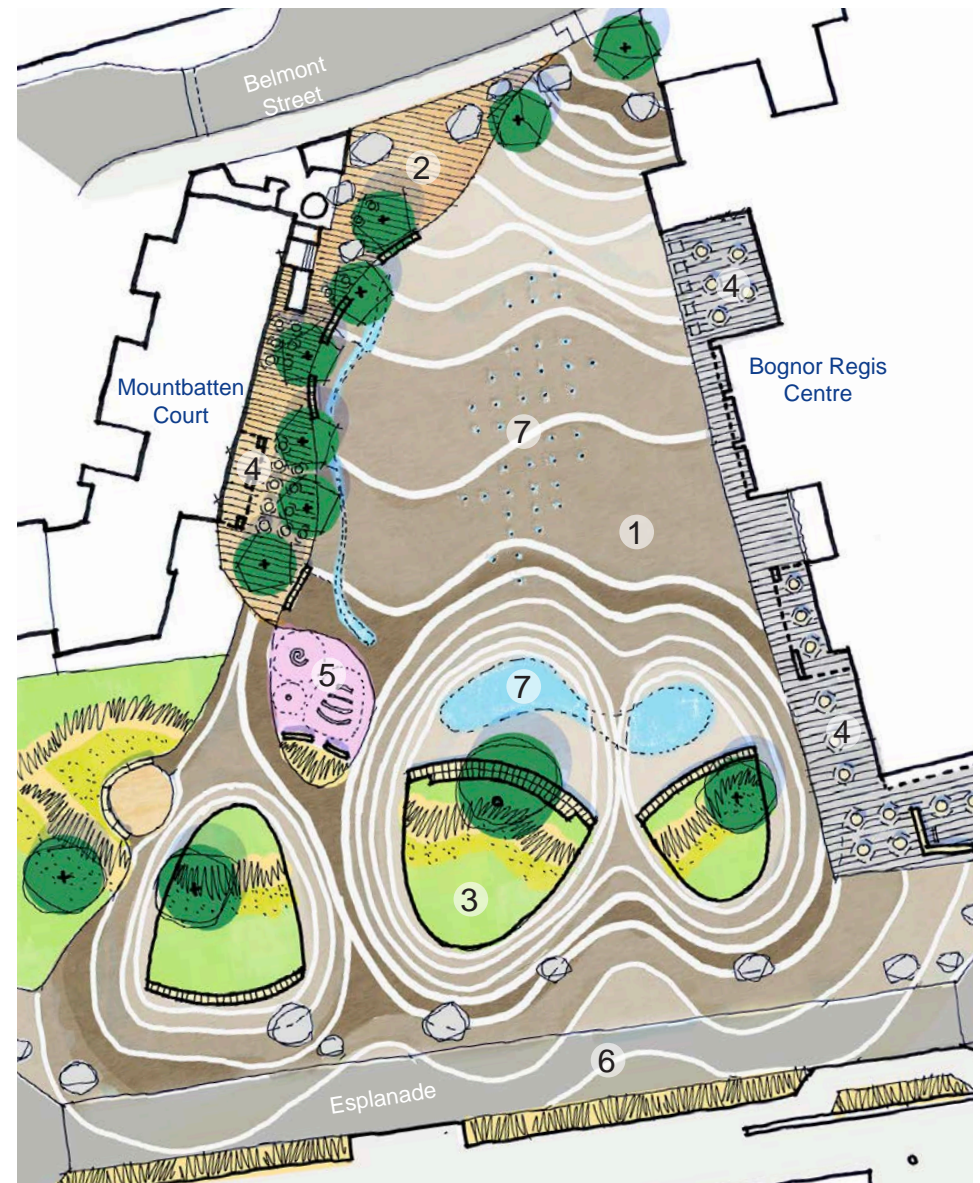
Seafront mounds



Play

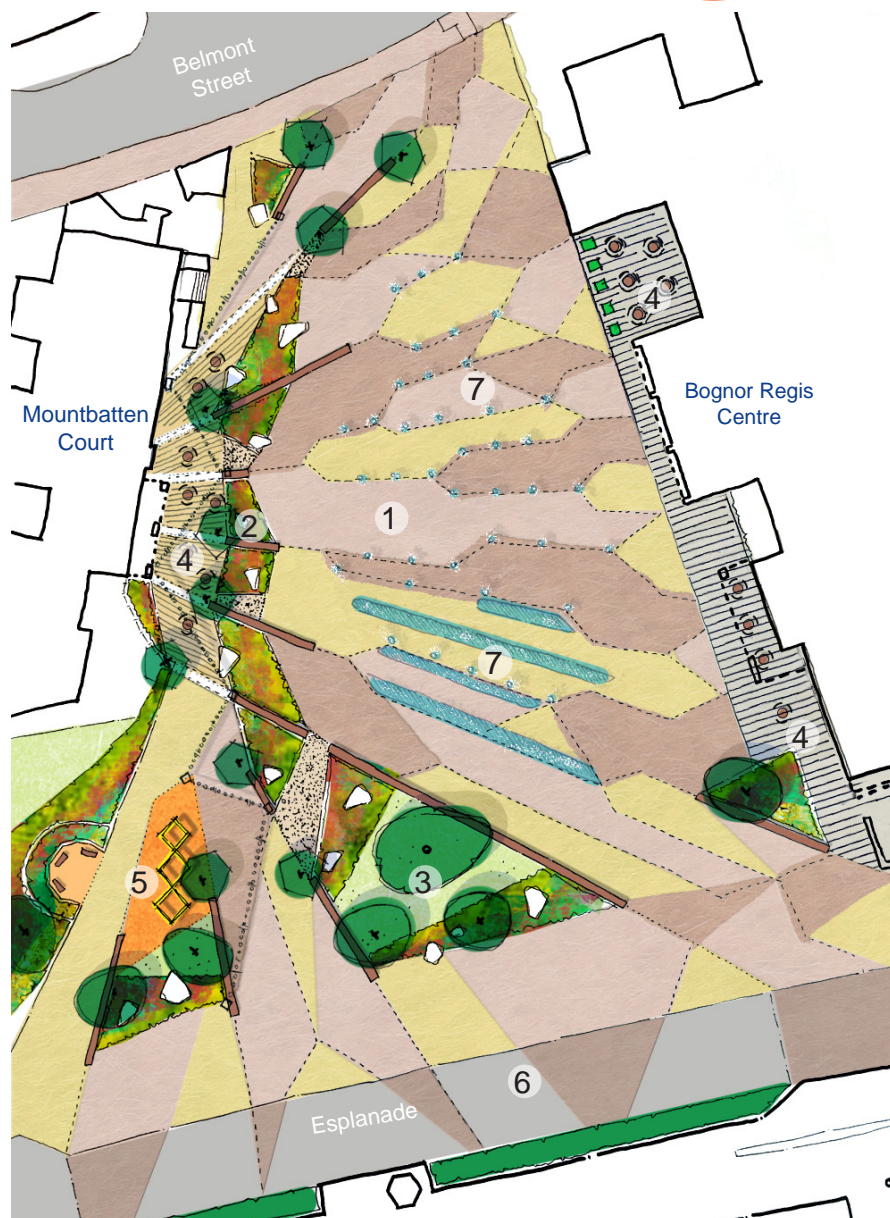


Water play



- 1 Flexible open space and patterned paving
- 2 Green corridor with trees and gabion seating
- 3 Seafront mounds with seating, grasses and lawn
- 4 Café spill-out space

- 5 Play area for younger children
- 6 Pedestrian-friendly surface with reduced-width carriageway
- 7 Water play area including water jets and shallow pools



- 1 Flexible open space and patterned paving
- 2 Green corridor with trees, planting and benches
- 3 'Drifts' of planting with low walls as seating/shelter
- 4 Cafe spill-out space
- 5 Play area for younger children
- 6 Pedestrian-friendly surface with reduced-width carriageway
- 7 Water play area including water jets and shallow pools

Sketch option 2: Sand ripples

This page describes Sketch Option 2, which is based on a geometric concept.

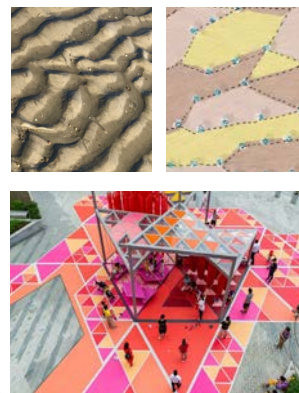
12. What are your favourite elements of this option? (please rank from 1 to 6, with 6 being most favourite and 1 least favourite)

- ☐ Green corridor low 'groyne' walls, trees, planting, seating, boulders and café seating areas
- ☐ Water play with jets and shallow pools in geometric pattern
- ☐ Dynamic paving in 'sand ripples' pattern
- ☐ Seafront mounds separated by 'groynes', trees providing shade and planting
- ☐ Small area with climbing frame for all-ages informal play and exercise
- ☐ Pedestrian-friendly surface to the Esplanade with reduced-width carriageway (concept only)

Green corridor



Dynamic paving



Seafront mounds



Water play



Pedestrian-friendly surface



Play



Pergola



Planting areas



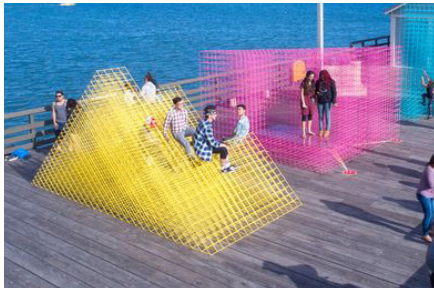
Seating opportunities



Lighting



Play



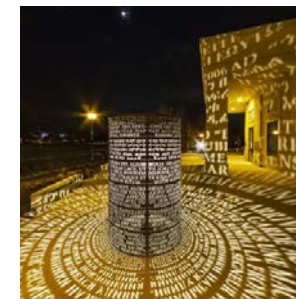
Additional elements

If budgets allow it may be possible to incorporate some additional elements within the scheme.

13. Which elements do you prefer most? (please rank from 1 to 7, with 7 being most preferred and 1 least preferred)

- ☐ Pergola providing additional shade, shelter and greenery
- ☐ Additional seating opportunities
- ☐ More or extended areas of planting
- ☐ More trees
- ☐ Further play opportunities
- ☐ More lighting
- ☐ Artistic or sculptural interventions

Art and Sculpture



Trees



Esplanade

This page presents a concept for the Esplanade with a more pedestrian-friendly environment and improvements to enable regular road closures to support events.

14. Are you supportive of this concept? (N.B. this design element will not be delivered as part of the Place St Maur project budget and programme)

1 2 3 4 5 6 7 8 9 10
Not so much Mostly Very much



Sketch visualisation of Esplanade



More opportunity for events



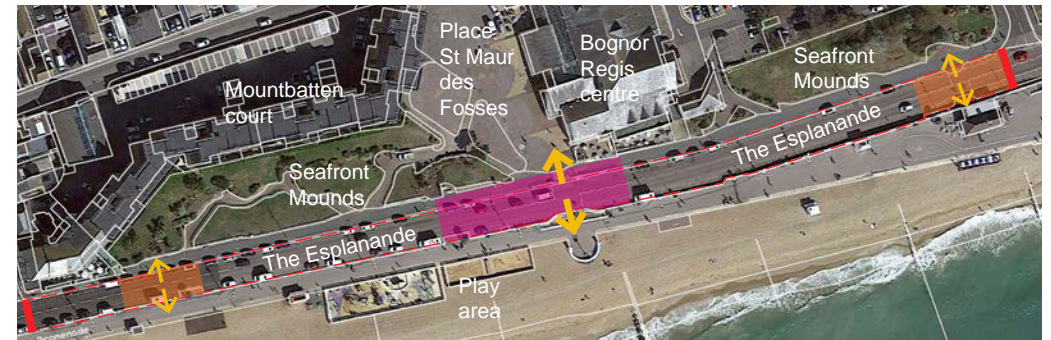
Sketch visualisation looking back to Place St Maur

Concept

As part of the Place St Maur regeneration project the design concepts will extend to include The Esplanade and explore potential opportunities for future improvements between Lennox Street and Clarence Road.

The Place St Maur paving design would be extended across onto The Esplanade streetscape creating a more vibrant, welcoming and pedestrian-friendly environment integrated with other landscape improvements such as new planting, seating and in-ground infrastructure to facilitate events.

The vision for both Place St Maur and The Esplanade would be to create a single identity and space for Bognor Regis able to accommodate a variety of events in the future - including along the Esplanade with periods of traffic restrictions to ensure pedestrian priority and greater use by the local community and visitors alike.



--- Extent of temporary road closures
— Road closure point

— Raised table
— Extension of Place St Maur paving

↔ Primary crossing point
↔ Secondary crossing point



The Esplanade looking east



Existing pedestrian crossing



The Esplanade looking south west

Concluding comments

15. Do you have any other comments about the proposals? If yes please comment below:

Next steps

Developing a Preferred Design

Please complete and return the questionnaire as feedback received will be used to inform the development of a preferred design for Place St Maur. We will provide an update on the preferred design for Place St Maur and concept design for the Esplanade in Spring this year.

Technical designs for Place St Maur will be developed through the summer with the view to appointing a landscape contractor and starting construction in Autumn.

Construction and Phasing

Construction at Place St Maur is anticipated to take place over a six month period, completing in Spring 2022. The concept design for the Esplanade will potentially form a future phase of works subject to funding availability.



Place St Maur
Current phase of works - design and implementation

	Esplanade Concept design and potential future phase of works (subject to funding availability)
---	--

Thank you for your time!